



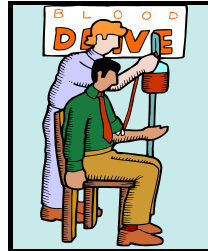
## AROUND CAMPUS

### CRI

10/6: Club Sports Council 6pm

10/7: Blood Drive 12-6pm RAC

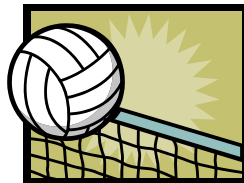
10/12: Volleyball Officials Clinic  
9-11pm Seminar Room



### Residence Halls

10/2-10/9: Eagle Village  
Hunger and Homelessness Food drive

10/6: Lover's Lounge 7 pm  
University Villas Clubhouse



## Hunger and Homelessness Week 2009

The Office of Student Leadership and Civic Engagement is sponsoring Hunger and Homelessness Week from October 5-9th, 2009. A variety of events and opportunities to serve will take place throughout the week, to include a Homelessness Speaker's Panel in the Russell Union Theater on October 7th at 7:00pm and a Homelessness Fair on Thursday in which you can learn ways to make a difference locally, nationally, and internationally. The week will conclude with a benefit concert at the RAC Amphitheater on October 9th at 7:00pm.



**For more information about these events, see the full schedule at <http://students.georgiasouthern.edu/leadership/civic/hunger.htm> or email Heather Jo Harralson at [hharrall-gw@georgiasouthern.edu](mailto:hharrall-gw@georgiasouthern.edu).**

## Are you leaving housing in Spring 2010?

Are you Graduating? Student Teaching? Studying Abroad? Transferring to another institution or just taking a semester off? Current on-campus residents who will not be living on campus for the spring semester need to notify the housing office by November 1, 2009, that they will not be returning to the residence halls. If so, you must complete the following steps:

(1) Complete the on-line cancellation at [www.gsuhousing.com/cancel](http://www.gsuhousing.com/cancel)

Does it matter when I cancel? Yes!

- if you cancel by **Nov. 1**, there is no cancellation fee
- if you cancel between **Nov. 2-Dec. 1**, there is a \$100.00 cancellation fee
- if you cancel after **Dec. 2** up to the first day of the spring semester, there is a \$200.00 cancellation fee.

(2) Provide official documents of your involvement in one of the above programs to the Housing Office to complete your cancellation.

(3) Check out of your residence hall with your CL and return your keys to avoid any improper check-out, cleaning, and/or lost key charges.



If you have any questions, please contact the assignment's staff at [housing@georgiasouthern.edu](mailto:housing@georgiasouthern.edu) or (912) 478-5406.

## Luke Bryan in Concert

Georgia Southern University alumnus Luke Bryan is giving back to his alma mater. Bryan will donate proceeds from an upcoming concert near the University campus to benefit Georgia Southern scholarships.

Luke Bryan,  
recording artist,  
Class of '99



The concert is scheduled for Monday, Oct. 5 at the Hurricane Branch Plantation in Claxton, Ga. with opening act Colt Ford.

Tickets can be purchased at [www.lukebryan.com](http://www.lukebryan.com).

## Opera Breve

Georgia Southern Opera presents a double bill of one-act shows. Where: Averitt Center for the Arts When: October 9, 10, and 11 Time: 7:30 p.m. There will be an additional matinee on October 11th at 3 p.m.



Tickets may be purchased at the door or through the Averitt Center Box Office at 912-212-ARTS (2787). Tickets are \$10 for General Admission, \$5 for Children, and FREE for Georgia Southern Students.

Would you like to be the **next Dean of Students?**

*Director of Greek Life?*  
*Coordinator of Orientation?*  
*Director of Student Media?*  
*Director of Student Activities?*



If so, you should attend

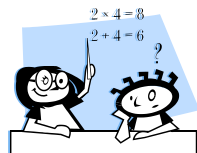
**Career In Student Affairs Day**

Friday, October 30, 2009

"Making the world a better place one *student* at a time."

Sponsored by Georgia Southern University's Division of Student Affairs and Enrollment Management

## Tutoring Available in Centennial Place!



Need help in Math, Biology, Chemistry, and/or English?

The tutors in Centennial Place can help you out. They are located in Building 2, where there is a 24 hour desk that will allow you to enter the building. Be sure to bring your ID!

## Campus Flu Shots

One of your best defenses against the flu is a flu shot. Georgia Southern University Health Services has scheduled a series of campus-wide seasonal influenza vaccination clinics beginning the first week of October.



### Scheduled clinics for Students:

**October 7th 5-7 PM Centennial Place Café (Building 2)**  
**October 15th 5-7 PM Eagle Village Clubhouse (classroom)**  
**October 26th 5-7 PM Southern Pines Clubhouse (classroom)**

### Scheduled clinics for Students, Faculty and Staff:

<b>October 13th</b>	<b>9 AM - 11:30 AM</b>	<b>RU Rm. 2084</b>
<b>October 21st</b>	<b>8 AM - 12:30 PM</b>	<b>RU Rm. 2084</b>
<b>October 29th</b>	<b>2 PM - 4 PM</b>	<b>RU Rm. 2084</b>

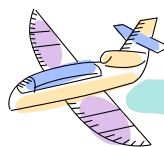
The vaccinations cost \$13 for faculty/staff and \$5 for students. You may pay by cash, check, Master Card or Visa. Please bring your **Eagle ID** and wear a short sleeve shirt/blouse.

**Please note that this is a separate vaccine from the H1N1 vaccine. Campus Health Services will schedule campus-wide H1N1 vaccination clinics once the H1N1 vaccine becomes available later this year.**



## ALTERNATIVE BREAK TRIP

If you love GSU and have a heart to serve those less fortunate, then please consider applying for the Alternative Break trip to Freeport Bahamas! The Offices of Student Leadership & Civic Engagement and Admissions will be taking students to the Bahamas from December 12 through December 19. Work may include construction, food and clothing handouts and visiting the local schools to serve as ambassadors and tell the Georgia Southern story!



Cost is \$500, which includes lodging, travel, and most food. Applications are available in RU 2024 and will be due on October 12, 2009.

If you have any questions, please contact Diana Hensley at [dhensley@georgiasouthern.edu](mailto:dhensley@georgiasouthern.edu) or by calling 912-478-0010.